



# ELEKTRAA

A PLAY BY ELIZABETH HORN

**JUSTICE IS COMING**

**EMERGING ARTISTS COMPANY - IN-PERSON - SUMMER 2021**

**NASHVILLECT.ORG**

“The death penalty is not about whether people deserve to die for the crimes they commit. The real question of capital punishment is ‘do we deserve to kill?’ “ - Bryan Stevenson

The story of Jacob and his list

**This unraveling thread of despair is  
my sole connection to the world.**

Unraveled, threadbare, torn, slashed, ripped

**Always repeating,  
never changing.** How can I incorporate repetition  
into the costumes?

What is the connection between love and grief and anger?

What is the through line of violence, daggers, death... how does this relate with childhood?

How do we take care of those who are hurting?

do we make them relive it? Do we twist their own story? Do we ignore?

Why is this show a show for youth? Why are kids doing this? What is important for them to explore here?

# Echos - layers, sheerness

Echos - cocoon - twist  
- shroud - distort -  
vulnerability - eerie

Silk v linen (soft v rough)  
Patent leather v barefoot  
Skin v covered/layers  
Sheen v flat

Distortion - fraying hems, off the  
shoulder, asymmetrical cuts

We all have our own cocoons, the web  
that covers parts of our hearts, parts of  
our stories. The thing that clouds us. The  
echos that ring in our ears.

Whose truth am I supposed to see?

...hate, it's such an empty word. If you had true hate you'd know where to direct it. If  
you had true hate you'd be here with me—you'd fight with me, not against me

What is the show saying about hate, about standing up for each other, for oppression?

How can I tie in Elektra, nurse, doctor, and Orestes? If they are indeed all family, all connected, how do we showcase that? Even  
if they aren't all family, they are cut from the same cloth, but not able to be woven together.

could we use some sort of patch work?

What is the significance of the  
Trojan horse story?

something that is opposite of  
your expectations - a surprise

What is the course of trauma?





Elektra - a gown  
that lives in  
between hospital  
gown and bias cut  
silk dress





What is Elektras cocoon?  
What are her confines? -  
her mental instability, her  
manipulative mother, her  
grief... what holes have  
been ripped in her  
cocoon?

How can we juxtapose  
the rough, natural texture  
of linen with that of silk?  
Or do we want linen on  
linen?

What is the chorus? Are they elektra? Other patients? Are those things the same? How are they different from her, and how are they the same?





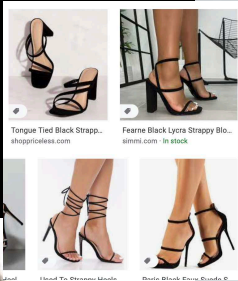
# Nurse



Scrub caps to delineate all nurses



# Clymenestra



# Orestes



Wooden swords  
traded for steel...

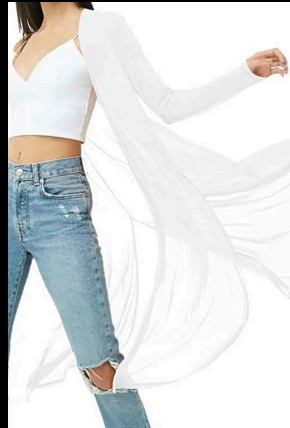


# Agamemnon



© Photofest/BNPS

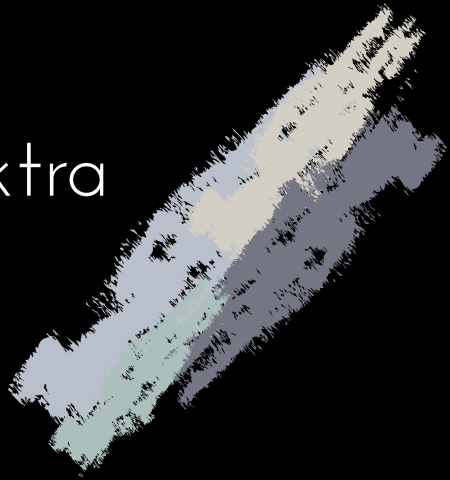
# Young Elektra



# Young Orestes



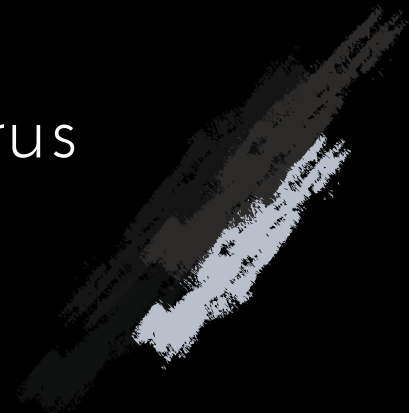
Elektra



Clymestra



Chorus



Orestes



Mycenea

