

SHE KILLS MONSTERS



BY QUI NGUYEN

Sharp, fighter,
fantasy, power,
angst, anger, fear,
heavy, judgement,
loud, abrasive,
chaotic, epic, grief,
brokenness, contrast,
angular



Unfinished

What ideas hadn't yet come together?

Abrupt

What has movement but doesn't flow?

Imagination

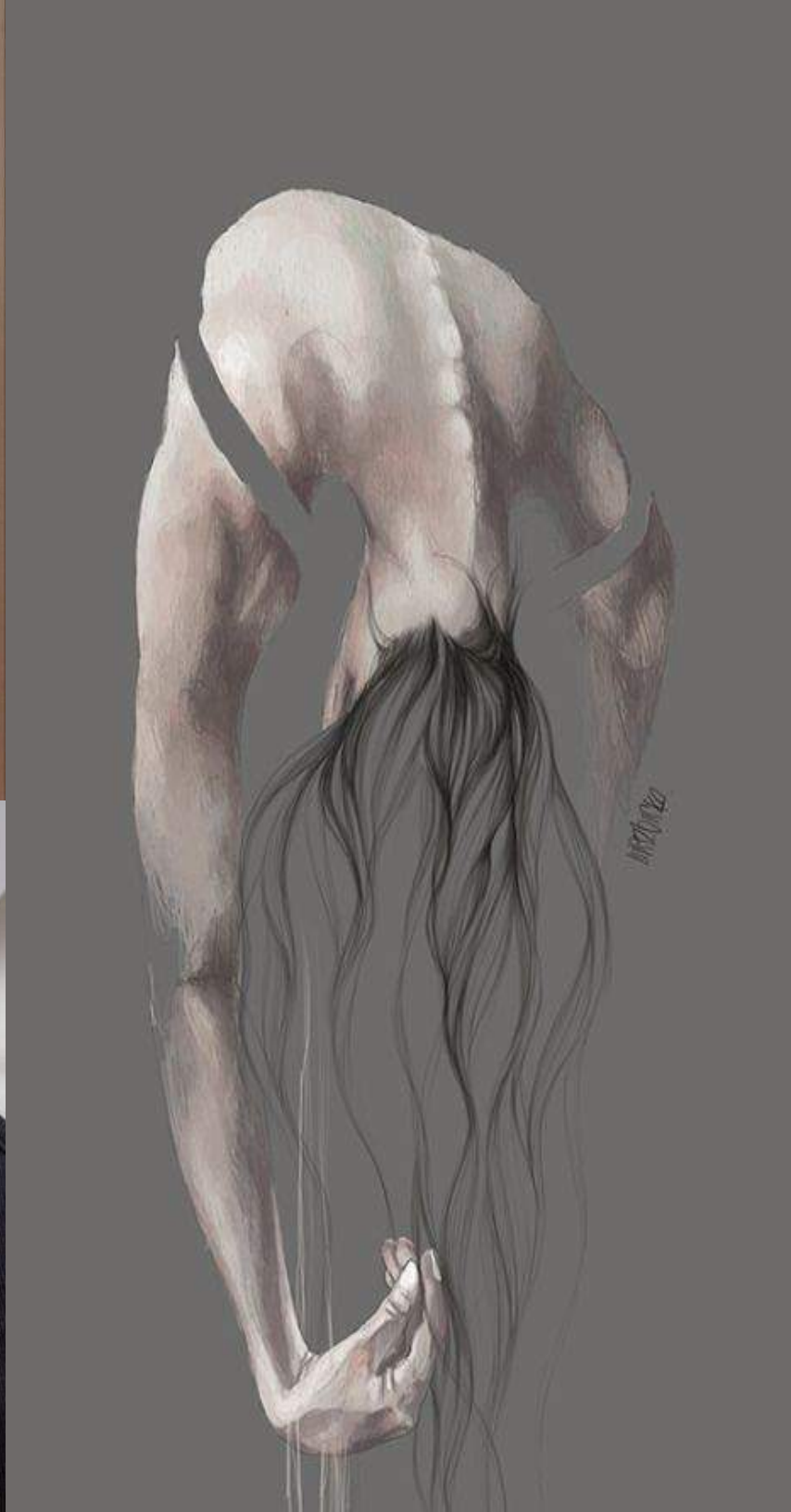
What comes from the comfort of creating in private?

Fantasy/Reality

What ways have her culture influenced her, and how has it not? How similar or different are the people and the characters?







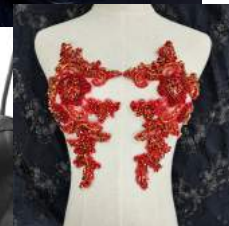
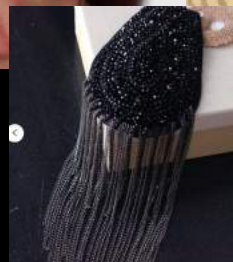
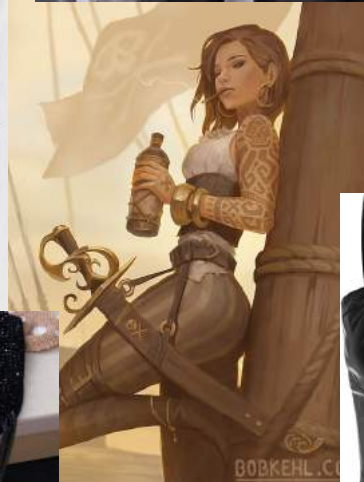
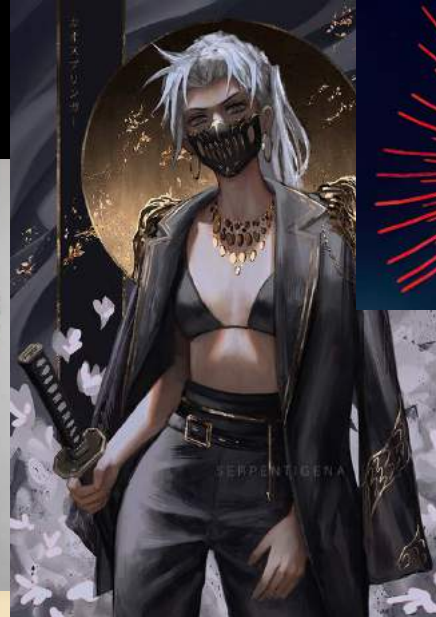
Tally, the Paladin

This is the place where Tally is all powerful. She is the maker and the main character. This place could be a relief, or another armor. She should look entirely in her element.



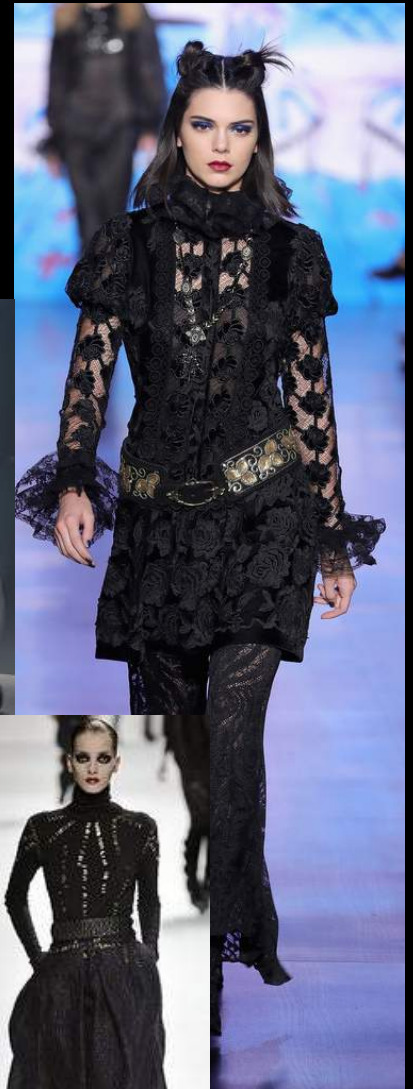
Lilith, the Demon Queen

She is brawn and beauty. She should look strong - here she has the strength Tilly might wish she had in real life. There is an allure to her.



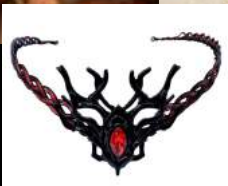
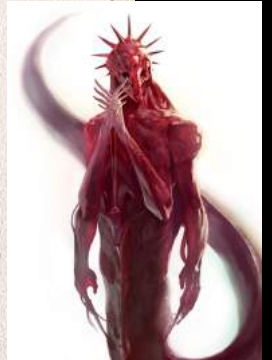
Kaliope, the Dark Elf

The elf of elegance. Perhaps she has the most flow, but it's because of being swift and sharp. She has the most edge.



Orcus, the Demon Overlord of the Underworld

The more chill, perhaps lazy, of the fighters. We should see a resemblance in elements to him and Lilith, but his should be significantly less polished.



Farrah, the Faerie

I love the juxtaposition between the sweet, beautiful fairy, and her gruff personality. I think the more we can play up beauty and softness, especially since the other characters



Evil Gabbi & Evil Tina, the Succubus

They are also from the demon world, so they should have some things in common with Lilith and Orcus.



Steve, the unsuccessful Mage

I like the idea of Steve looking the least polished, even more so than Orcus. He is just thrown in, and could look the most homespun. Very much what the kid would come up with on his own.

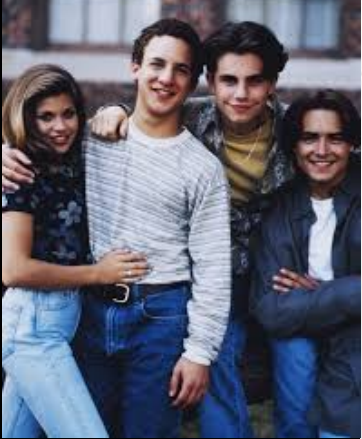


Miles, the Gelatinous Cube

I want the cube to look like it has movement - we could of course do the PVC structure, with fabric or some other covering around it. This would allow for access into the cube easily. But I don't think this looks very good. I like the idea of the glowy green with saran wrap or something similar for light to really play off of. Id love when it turns into Miles for it to be basically his normal costume, but with green touches - something really oozy looking.



The Real World



95x2.008

2002-8-16

The Real World

Agnes



Vera



Miles



Chuck



Kobolds

For the Kobolds, we will use some wrist wraps and ankle/calf wraps for each of the actors. They will also have some sort of either cross belt or rope, some accessory that will go across their chest/shoulders. (I have brown cross belts already at ST.)



Wraiths



We can use the two that were purchased for Spongebob and paint them black. Idea would be that each Wraith has one hand that is just gloved with black to hold their weapon, and the other would have the finger contraption to play with.

I've built some black hooded vests for the 3 Wraiths. Those will be ghooged up with some interesting black fabric I found in your shop, as well as some cheesecloth that I'll dye

Bugbears



I want the Bugbears to all have some pieces of armor. I believe I have 3 cauldrons from Camelot, which would be my preference. Otherwise I have some gauntlets and such as well.

They also stand out to me as very hairy creatures, so I'm thinking to give each performer a pair of fur covered gloves as well.

Kicketh Ass

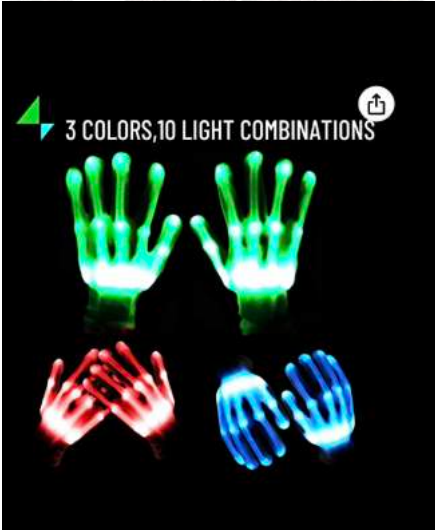


VINE WISP <i>Large Plant creature</i>
<i>Amber Class 13, Neutral-aligned</i>
HP: 200 (20, 20x10) 100
Speed: 6 (S, 7), 12 (R, 20x10)
STR: 10, DEX: 15, CON: 10, INT: 10, WIS: 15, CHA: 10
Skills: Perception +4, Stealth +6
Special Abilities: +2 to AC, +2 to Saves, +2 to Skills
Actions: Flyby, The wisp blows a powerful gust of wind, which is then used to carry away its body.
Challenge: 2 (200 XP)



D. HROGALA

of used their ways to grow, feed, growing and absorbing all around them. They have an insatiable hunger for life and will kill anything that crosses their path.



3 COLORS, 10 LIGHT COMBINATIONS

Beholder



For the Beholder, I'm thinking to get some hula hoops to create a sphere. Then we can cover that with some spandex and maybe paint the eye and mouth on it. Still working through that, but that's the general build I'm thinking.

There also inflatable eyeballs we could get, as an option.